

A Complete Installation Guide of BitVare for EML

Table of Contents

- 1) Introduction.....
- 2) System Requirements.....
- 3) Installing BitVare for EML.....

1. Introduction

Welcome to the Installation Guide of BitVare for EML

In the software manual, you will get the complete and brief installation steps to access BitVare for EML.

2. System Requirements

Before you start installation of the BitVare for EML software, first, make sure that the host computer meets the entire system requirements and has sufficient memory available

- **Windows Operating System, it will support all edition of Windows OS, including Windows 10.**
- **Minimum 30 MB Space is required in your machine.**
- **1 GB RAM, 2.4 GHZ Processor is recommended**

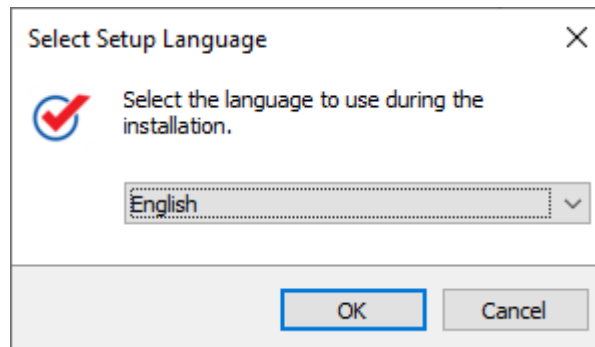
3. Installing BitVare for EML

For installing BitVare for EML, you first of all require the installer file or .exe on your machine/computer/system/pc. If you do not have it, then you can download it by using a single click on the link given in the right side: <https://www.bitvare.com/downloads/bitvare-for-eml.exe>

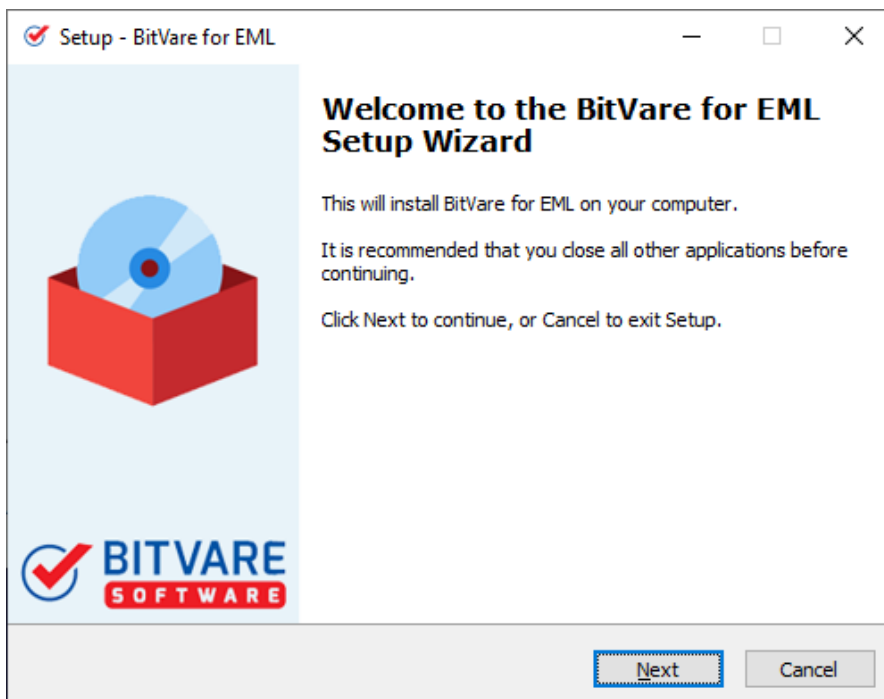
After downloading the installer file, follow the below steps:

- **Double-click** on the .exe Installer file that open a dialogue box of select setup language. It provide 10+ languages options that you can choose as per the requirement.

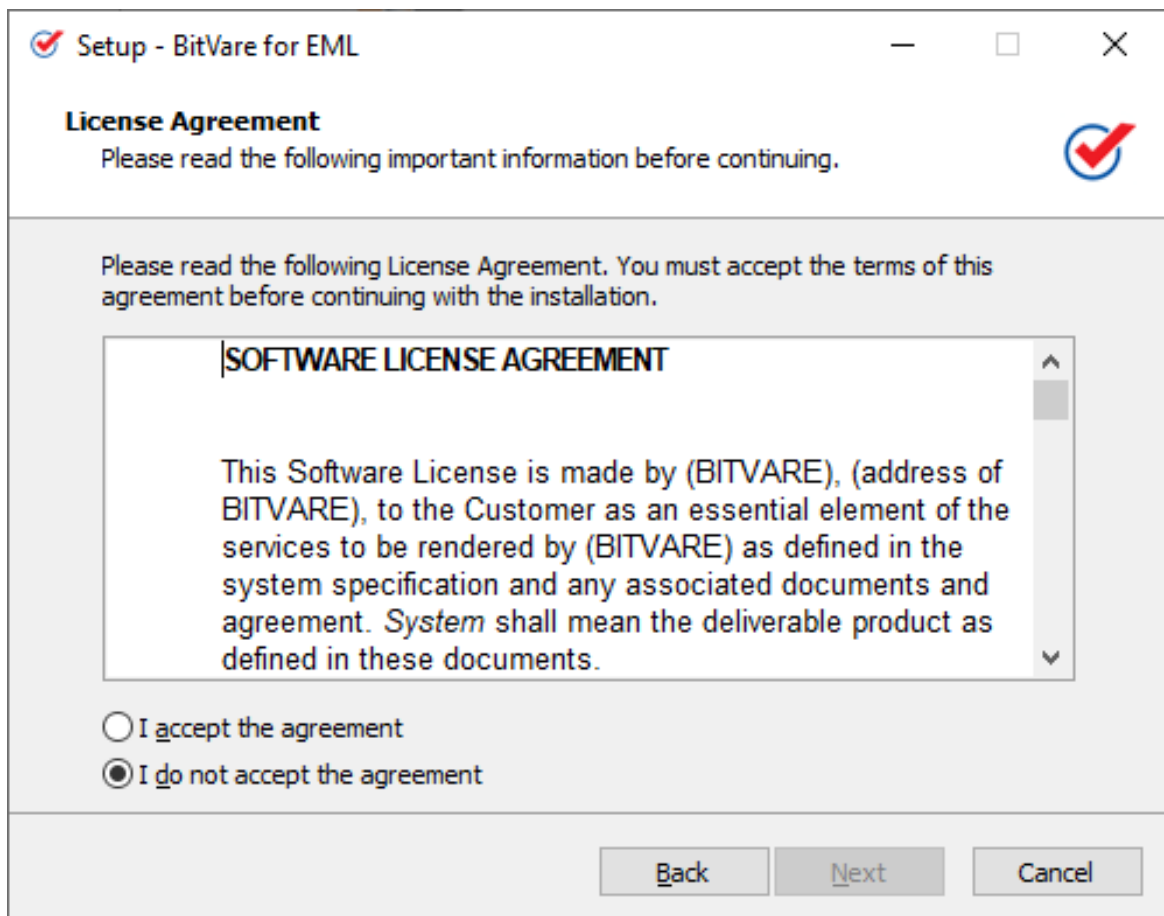
- After selecting any one language, you can click on the OK button.



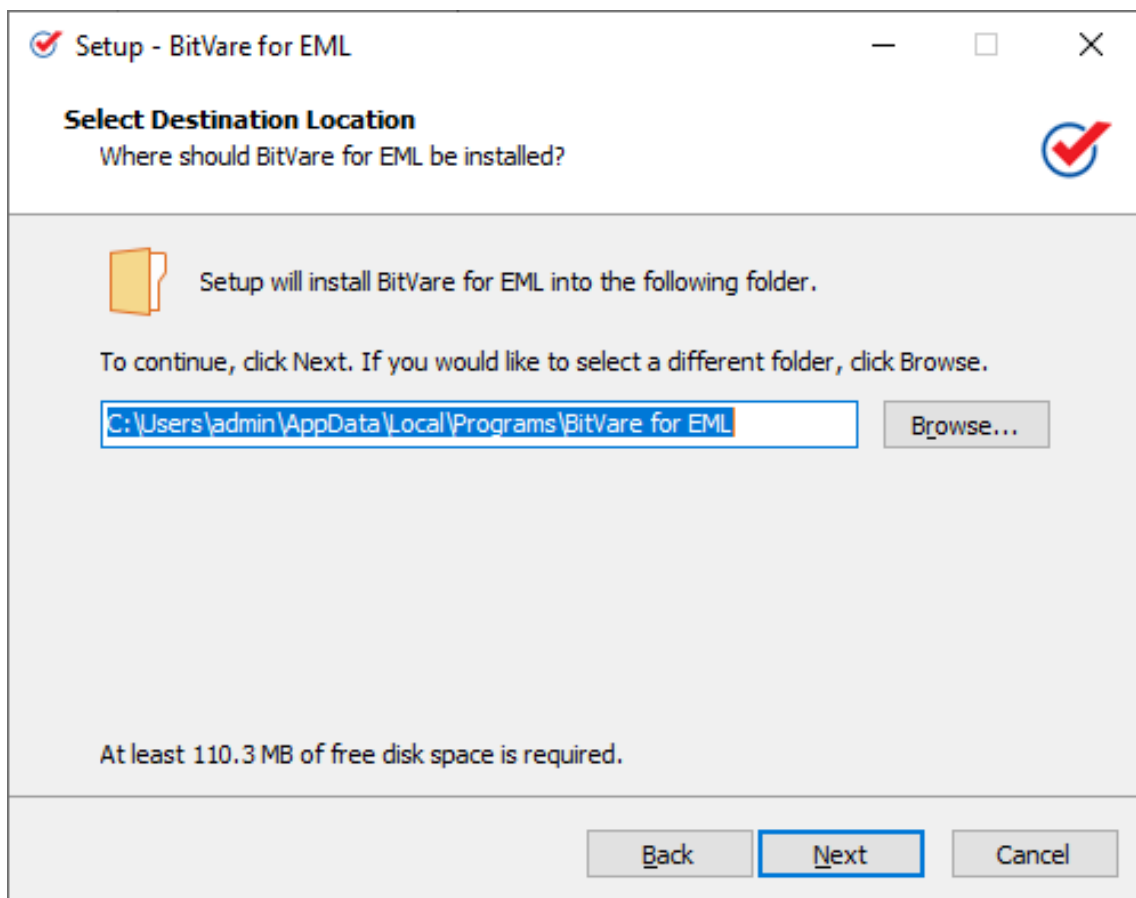
- Now, you will see the welcome Window of BitVare for EML with the **NEXT** button. So, click next.



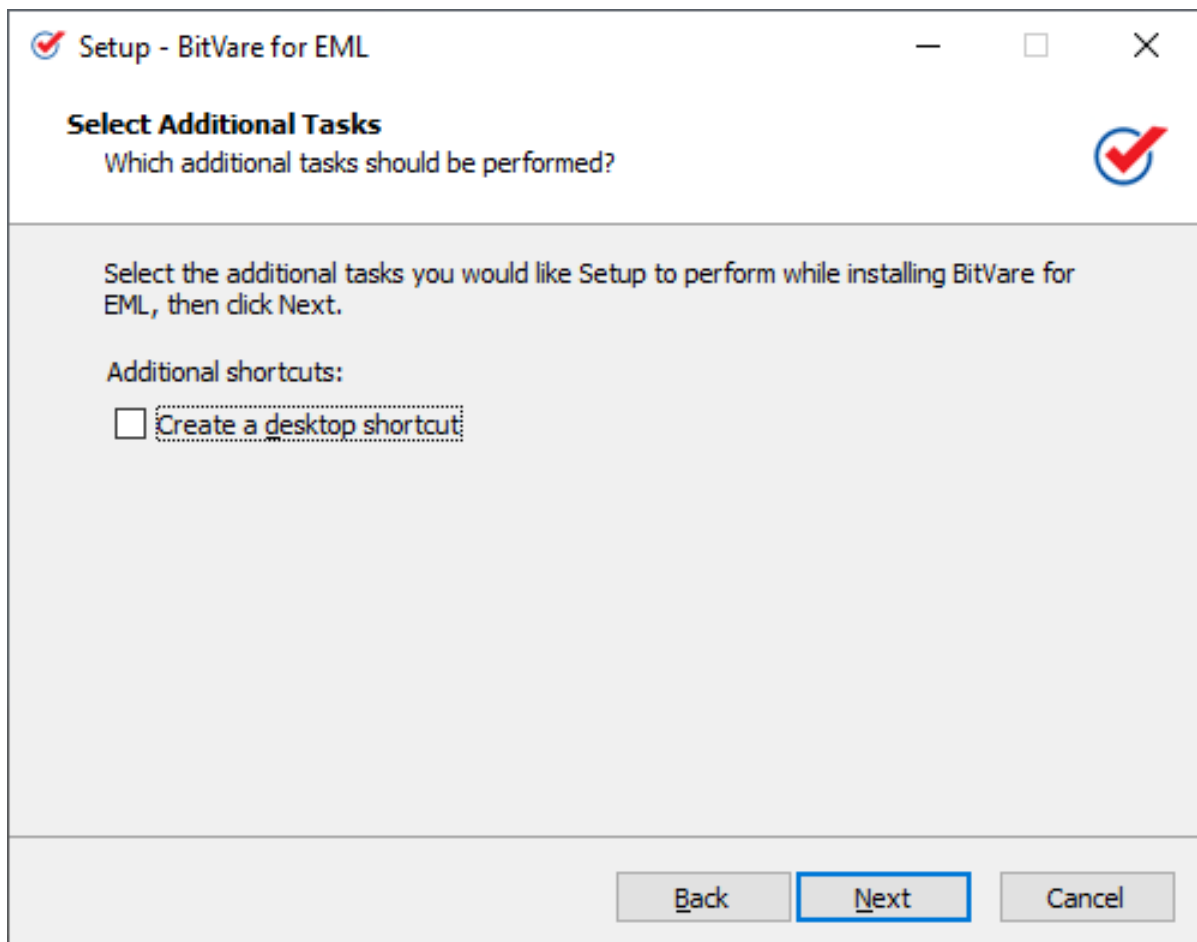
- This screen shows the software license agreement. Read the complete agreement and click on the “**I accept the agreement**”. Then, press **Next**.



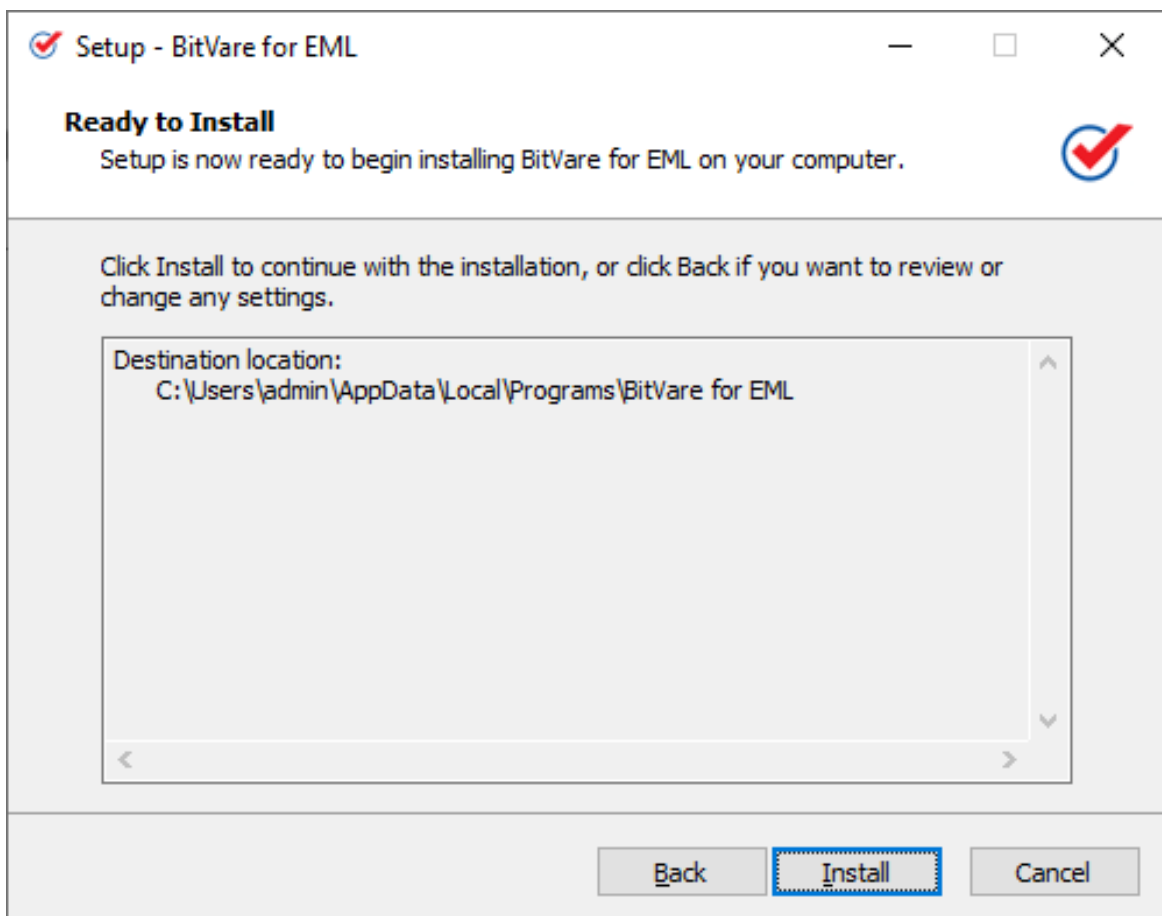
- In the current screen, you can choose the setup location where you want to install the software. And, then click Next.



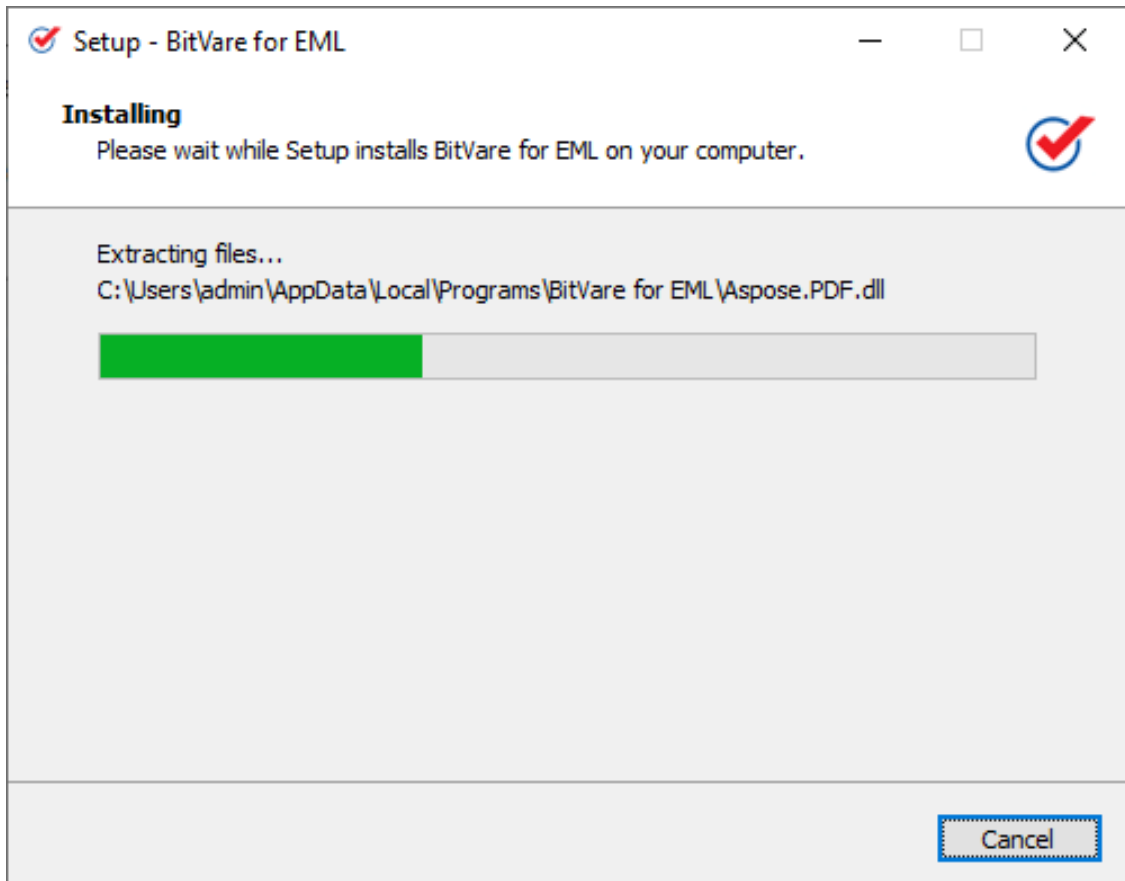
- Now, choose the additional tasks that you need to setup while downloading BitVare for EML and then, press Next.



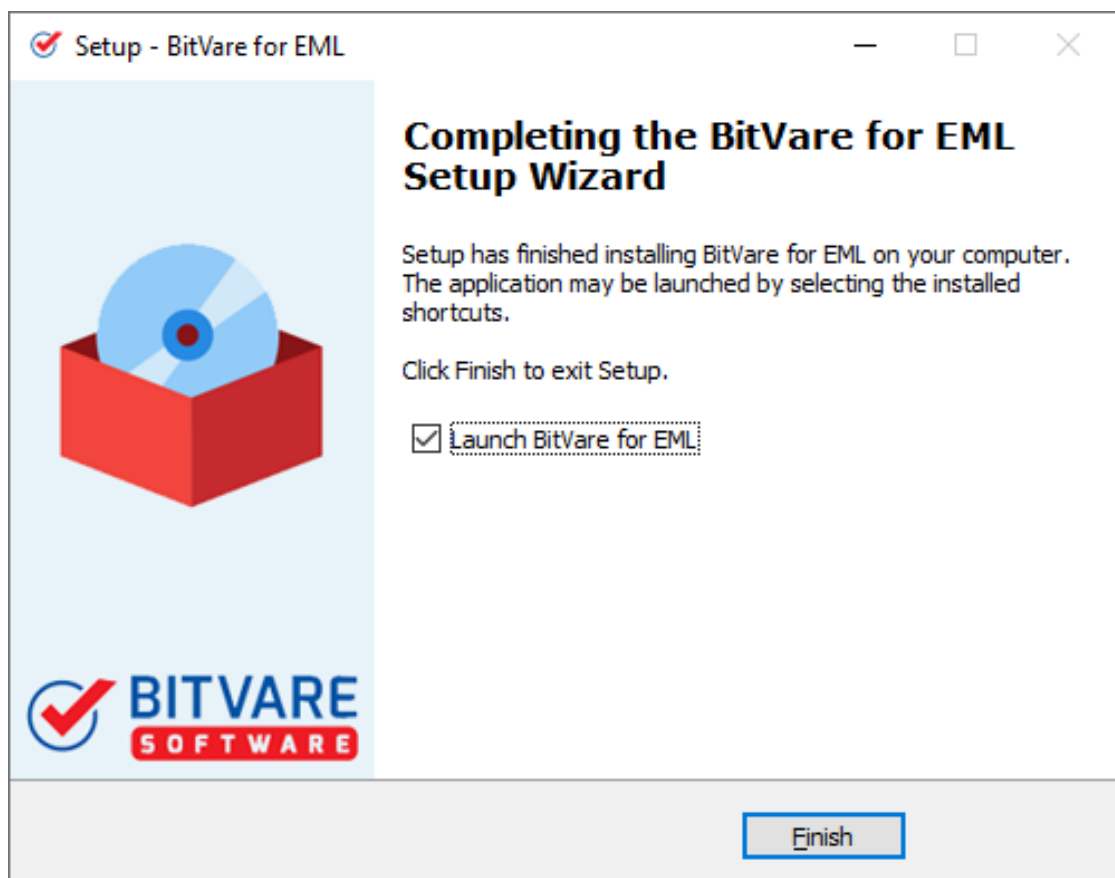
- Now, the software is ready to install so you can directly click on the Install button.



- A single click on install button will starts the live installing process as shown in the picture:



- When the installing process is complete, you will get the new Window of completing the BitVare for EML setup Wizard. Click “**Finish**” button.



- Finally, the BitVare for EML is installed properly on your system. Now, you can access the complete program to perform the conversion steps.

